



**YOUR CARGO,  
OUR COMMITMENT**



**MULTIMODAL  
PROJECTS**  
PROJECT LOGISTICS & SHIPPING AGENTS



A large cargo ship is being lifted by a crane at a port. The ship is white with a red hull and is suspended by orange slings. The crane is black and extends from the top left. The background shows a blue sky with white clouds and a port area with other ships and containers.

## ABOUT US

Multimodal Projects was established with strong ambition and minimal resources. Initially functioning as a marine agency, the scope of Multimodal Projects is focused on expanding into a comprehensive freight forwarding company. As the business grew, it became clear that assembling a team with a unified vision of excellence and dedication to customer service was crucial.

Today, Multimodal Projects provides an extensive range of services to clients across various industries.

The company strives to become a significant player in project cargo logistics, including but not limited to oil and gas, mining, power and energy, construction, military, automotive, and many others.

More than logistics...



How we work?

We offer comprehensive solutions, including storage, documentation, and customs clearance, thanks to our robust network of partners and suppliers.

The setup of Multimodal Projects, combined with the experience of our team, our equipment, and financial stability, results in precise planning and flawless execution for multiple projects simultaneously.



## Our Focus Areas Include



On-Site  
Logistics



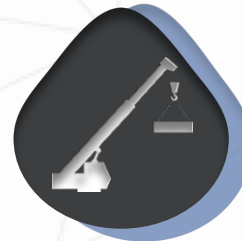
Barge  
Operations



Port  
Operations



Special  
Transports



Project Cargo  
Handling



Marine Agency  
Services

Special  
Military Cargo  
Transport



# Our Team



Our team comprises a wide range of technical and operational experts, ensuring that we can tackle any logistical challenge and deliver effective solutions:

Engineers  
Riggers  
Welders

Electricians  
Forklift Drivers  
Crane Operators

# We are able to provide

Storage and site layout plans to ensure efficient storage in the port, avoiding extra handlings.

Load calculations considering the cargo's centre of gravity and the stability of the lifting equipment.

Stowage and securing plans to ensure proper positioning and securing of cargo for transport.

Lifting and rigging plans outlining the sequence of lifts and equipment used.

01

02

03

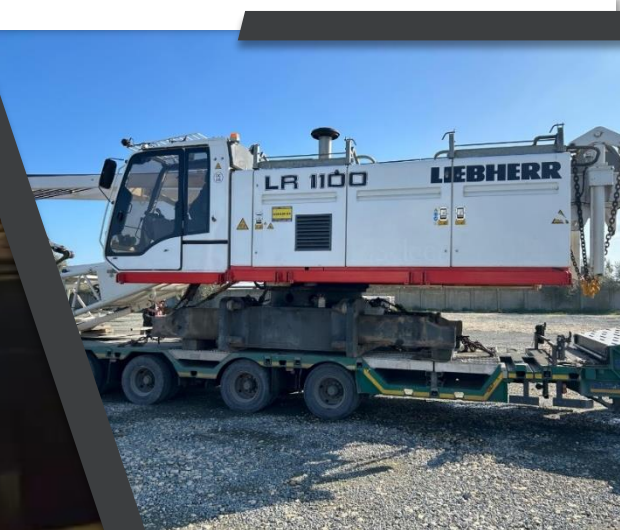
04





## At Multimodal Projects...

We don't just stop at planning; we also execute the plans ourselves, managing the actual port operations with our skilled team and specialized equipment.



# Strengths



Comprehensive  
method  
statements

Adequate staff to  
handle multiple  
operations at once

Technical  
innovation

Advanced  
technical  
knowledge

Experienced  
team



High HSEQ  
standards



Commercially  
competitive



Quick responses  
to client requests  
on short notice

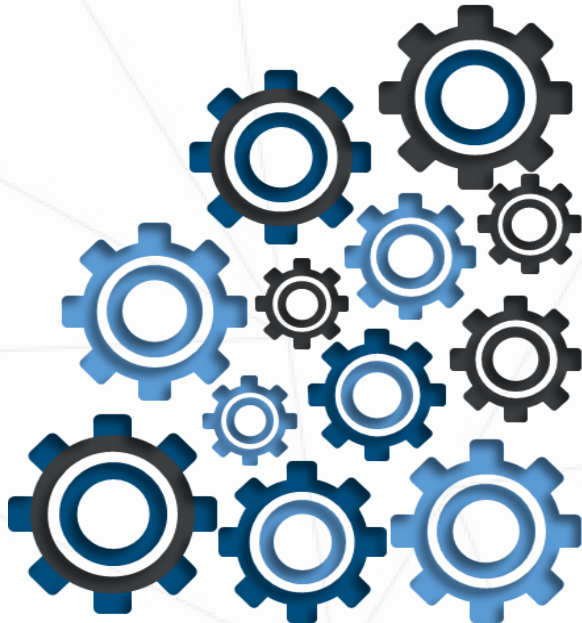
Clear  
feasibility  
studies

Long-term  
predictability  
and reliability





## Strengths



- ✓ Strong reputation and extensive partner network.
- ✓ Experience to foresee potential issues and precise execution.
- ✓ Accurate planning and coordination.
- ✓ Timely and detailed reporting.
- ✓ 24/7 monitoring and coordination of all operations.
- ✓ Asset-based trucking service.
- ✓ Advanced technical expertise for truck and barge loading and transport.
- ✓ Complementary services managed by our own personnel.



# MULTIMODAL PROJECTS

PROJECT LOGISTICS & SHIPPING AGENTS



Our team handles all technical and commercial aspects of potential operations, positioning Multimodal Projects closer to the forefront of transporting abnormal cargoes.



Multimodal Projects becomes actively involved in trade to and from countries such as Serbia, Hungary, Bulgaria, Ukraine, Azerbaijan, Kazakhstan and Moldova.



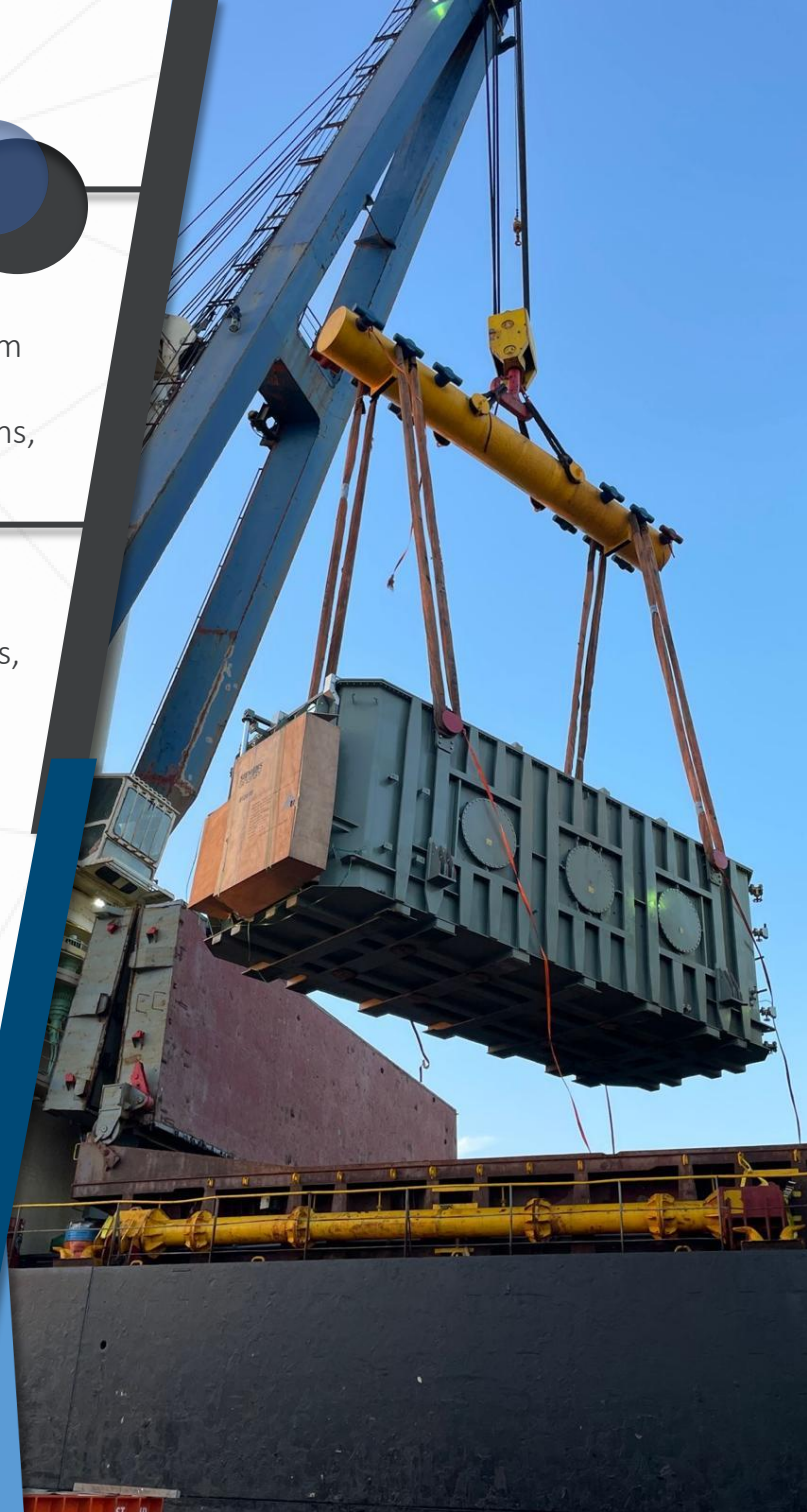
We provide complex solutions, including storage, documentation, and customs clearance, thanks to our strong network of partners and suppliers.

## Port Services

We offer a wide variety of port services, from straightforward forwarding to complex engineering tasks like lifting and lashing plans, lashing services, and cargo packing.

Whether it's project cargo, bulk cargoes, or steel, our creative solutions are perfectly tailored to meet our clients' demands, offering technical feasibility and competitive pricing.

Every project requires a unique approach to ensure safe and efficient handling. We meticulously calculate and plan each project we undertake, always considering various factors such as cargo dimensions, weight, and characteristics, as well as vessel capacity, lifting and rigging equipment, and port infrastructure.





# MULTIMODAL PROJECTS

PROJECT LOGISTICS & SHIPPING AGENTS



## Marine Agency Services

Despite the unique demands of each project, our agency department remains dedicated to delivering consistent, long-term, and comprehensive service. Our efforts are rewarded with positive feedback from customers, affirming that we are upholding our business values.





Port Disbursement Account (D/A) checking, validation, and negotiation for local and international customers.



Port, customs, and immigration clearance.



24/7 monitoring and coordination of all cargo and port operations.



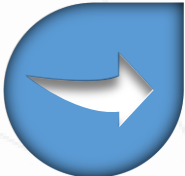
Discharge and loading arrangements and supervision.



Waste and garbage removal.



Firefighting equipment and appliances (portable items).



Berthing and unberthing planification.



Final Disbursement Account (FDA) arrangements.



Technical supplies: engine-deck, galley-cabin stores, BA charts, etc.



Supply of bunkers, water, and provisions.



Boat hire arrangements for surveyors.



Crew visas, sign-on/off, and port passes.

# Health, Safety, Environment, and Quality (HSEQ) Policy



We are committed to ensuring that our employees and partners are well-trained and adhere to strict regulations to prevent accidents and minimize environmental impact. We maintain high-quality standards in all our services to meet client needs.

## Our priorities include:

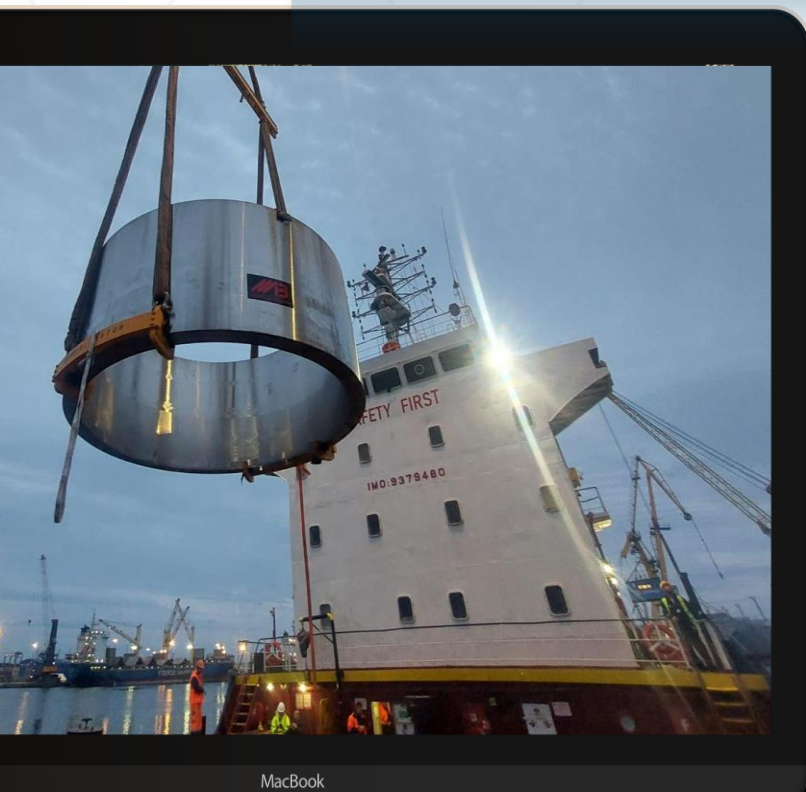
Uncompromising focus on safety

Employee engagement

Minimizing environmental impact

Continual improvement

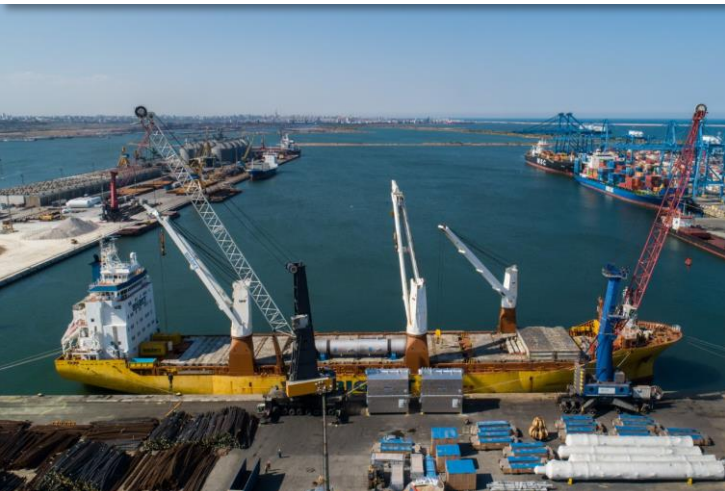
Customer satisfaction



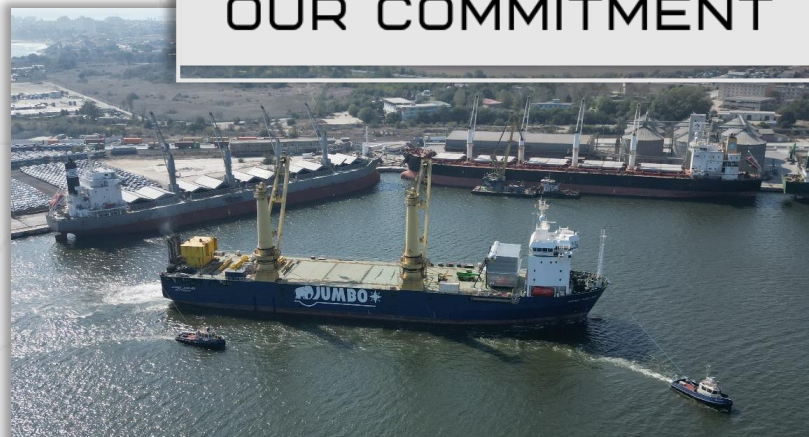
# Our certifications



Contact Us:



YOUR CARGO,  
OUR COMMITMENT



[www.modalprojects.com](http://www.modalprojects.com)



[office@modalprojects.com](mailto:office@modalprojects.com)



+40341453240



55A Tomis Boulevard, 1st floor,  
900725 Constanta, Romania

