



Dear Sirs,

First let's give you brief introduction about our company "EL KHALIL FOR FOODSTUFF & WHOLESALING" as a major reputable supplier of wide range of high qualified Egyptian products, **with strong focus on exporting SEEDS , GRAINS , Spices and Herbs.**

Our company is Organic, **ISO9001:2008** and **HACCP** certified..

We guarantee safety of Food and satisfy our customer needs and expectation.

Please check here's our range of products, also please note that we have the ability to provide you with any other products out of this range..

# GRAINS & SEEDS

## WHITE KIDNEY BEANS



## **Quality HPS**

**Boiling (cooking) time 45 minutes**

- **SIZE 180 – 190 / 100 gr.**
- **SIZE 180 – 200 / 100 gr.**

**Container 20' load 25 MT**

## **BROAD BEANS**



**Light Color**

- **Medium Size**
- **LARGE Size 65-70 / 100 gr.**

**Container 20' load 18 MT.**

## **SPLIT BEANS**



**Split Beans Size 12, 13, 14 mm**

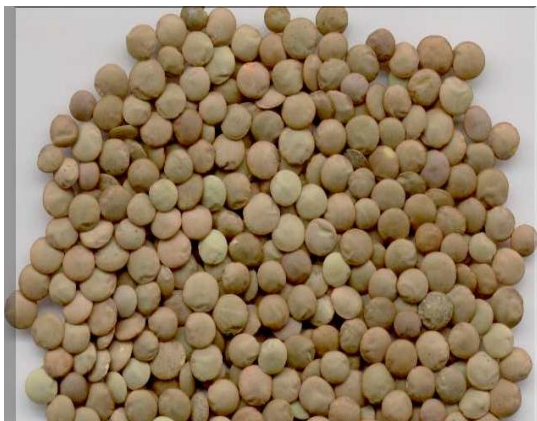
**Container 20' load 18 MT.**

## CHICKPEAS



**SIZE 7,8,9,12 MM**

## WHOLE LENTIL



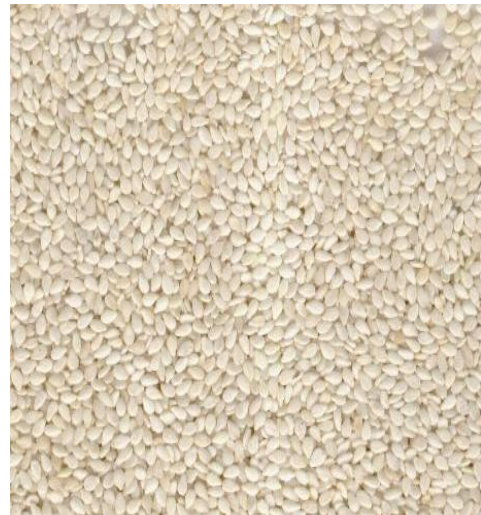
- ❖ **Green Whole Lentil**
- ❖ **Brown Whole Lentil**

## RED LENTILS



- ❖ SPLIT RED LENTILS
- ❖ WHOLE RED LENTILS

## SESAME SEEDS (*Sesamum indicum*)



**Purity Min. 99%**

- ❖ GOLDEN SESAME SEEDS
- ❖ WHITE SESAME SEEDS
- ❖ PEELED SESAME SEEDS

## SUPER MELON SEEDS



**Packing in new pp bags 25 kg**

**Container 20' Ft Load 14 Tons**

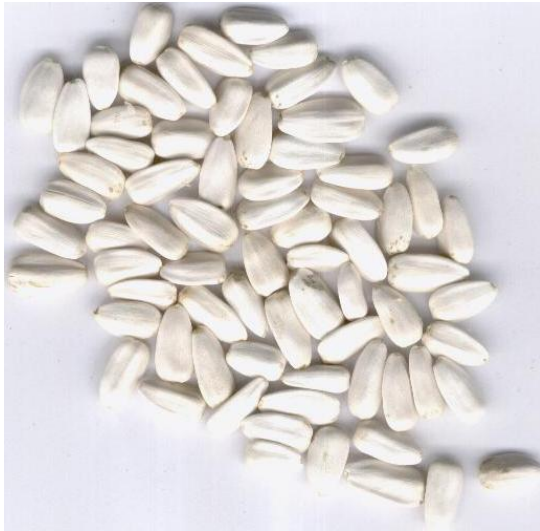
## **PUMPKIN SEEDS**



**Purity Min. 99%**

**Container 20' load 14 MT**

**SUNFLOWER SEEDS** (Semen hellianthi)



**Purity Min. 99%**

- ❖ **WHITE Sunflower seeds**
- ❖ **STRIPED Sunflower seeds**

## **LINSEEDS**



## **FENUGREEK SEEDS (Foenugraeci semen)**



**Purity Min 99%**

**Packing New Polypropylene bags 25 kgs**

**Container 20' load 20 MT**

## **CLOVER SEEDS**



# **SPICES & HERBS**

## **ANISE SEEDS** (*Pimpinella anisum*)



**Purity Min. 99%**

**MT/20' FCL: About 11 MT**

**MT/40' FCL: About 22 MT**

## **CARAWAY SEEDS** (*Carum carvi*)



**Color: Brown**

**Purity Min. 99%**

**Without tails**

**20' FCL: 14 MT**

**40' FCL: 25 MT**

**FENNEL SEEDS** (*Fructus foeniculi*)



**Purity Min. 99%**

**Color: Green**

**MT/20' FCL: About 13 MT**

**MT/40' FCL: About 25 MT**



**CORIANDER SEEDS** (*Fructus coriandri*)



**Purity Min. 99%**

**Packing New Polypropylene bags 25 kgs**

**Container 20' load 14 MT**

**CUMIN SEEDS** (*Cuminum cyminum*)



**Purity Min. 99%**

**Color: BROWN**

**CONTAINER 20' LOAD About 14 MT**

**CELERY SEEDS** (*Apium*)



**Purity Min. 99%**

**PAPRIKA** (*Capsicum annuum* )



**Paprika is fine powder ground produced from peppers ripened to redness from certain varieties of *Capsicum annuum*. The powder can vary in color from bright red to rusty brown.**

**TURMERIC** (*Curcuma longa*)



**Fine powder, bright yellow used from antiquity as dye and a condiment.**

**NIGELLA SEEDS** (*Nigella sativa semen*)



**Purity Min. 99%**

**20' container load 13 Metric Tons**

**40' container load 26 Metric Tons**

**BLACK PEPPER** (*Piper nigrum*)



**Spicy aroma and hot pungent taste.**

**Essential oil content 2 - 4%**

**CLOVES** (*Syzygium aromaticum*)



**Color: rust-brown**

**Measuring 12 - 16 mm long with a tapered stem, the large end of the clove is the four-pointed flower bud.**

**LAUREL LEAVES** (BAY)



**CARDAMON** (*cardamomum*)



**Green, full, and firm.**

**CINNAMON** (*Cinnamomum Zeylanicum*)



**Cinnamon Sticks/ Powder**

**SALEP** (*Orchis mascula*)



**PEPPERMINT** (*Mentha piperita*)



**Purity Min. 99%**

**CRUSHED / TBC**

**Color: Green**

**MT/20' FCL: About 5 MT**

**MT/40' FCL: About 10 MT**

**SPEARMINT** (*Menthae crispa*)



**Purity Min. 99%**

**CRUSHED / TBC**

**Color: Green**

**Packing: Net 25 Kg PP bags**

**MT/20' FCL: About 5 MT**

**MT/40' FCL: About 10 MT**

**CONTAINER 20' load 18 MT**

**DRIED PARSLEY** (*Petroselinum crispum*)



**Purity Min. 99%**

**20' FCL: About 5 MT**

**40' FCL: About 10 MT**

**Color: Green**

**Packing: Net 20 Kg PP bags**

**MARJORAM** (*Majorana hortensis*)



**Purity Min. 99%**

**Color: Green**

**Packing: Net 20 Kg PP bags**

**20' FCL : About 5 MT**

**40' FCL : About 10 MT**

**DILL** (*Anethum graveolens*)



**Purity Min. 99%**

**Color: Green**

**Packing: Net 25 Kg PP bags**

**MT/20'FCL: About 5 MT**

**MT/40'FCL: About 10 MT**

**THYME** (*Thymus vulgaris*)





**Purity Min. 99%**

**Packing: Net 25 Kg PP bags**

**20' FCL: 6 MT**

**ROSEMARY** (*Rosmarinus officinalis*)



**Purity Min. 99%**

**Packing: Net 25 Kg PP bags**

**20' FCL: About 6 MT**

**BASIL** (*Ocimum basilicum*)



**Purity Min. 99%**

**Color: Green**

**Packing: 10 Kg**

**FCL 6 MT /20'**

**FCL 12 MT/40'**

**DRIED ONION** (*Allium cepa*)



**❖ DRIED ONION SLICES**

❖ **DRIED ONION POWDER**

**GARLIC POWDER** (*Allium sativum*)



**GINGER** (*Zingiber officinale*)



Ginger roots are the rhizomes twisted and dug up carefully with a hoe, these 'hands' are cleaned, washed, scraped, peeled carefully with specially designed knives and dried in the sun for about eight days.

**DRIED LEMON** (*Citrus limon*)

❖ **SUN DRIED LEMON**

Color: Brownish yellow

❖ **MACHINE DRIED LEMON**

Color: Black



## **DRY MOLOKHIA** (*Corchorus olitorius*)



### **❖ DRY MOLOKHIA LEAVES**

**Packing in carton box, each carton box contains 5 Kg**

**Container 20 ft = 280 carton box 5kg**

**Container 40 ft = 560 carton box 5kg**

### **❖ DRY MOLOKHIA CRUSHED**

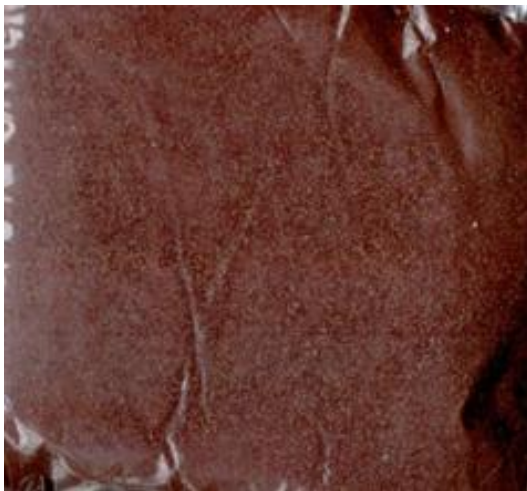
**Packing Polypropylene bags 25 Kg**

## **LEEK POWDER**



**Dried Natural Leek**

## **BEEF POWDER**



**Dried Natural Beet**

## **SPINACH POWDER**



**Dried Natural Spinach**

**KALE POWDER**



**Dried Natural Kale**

**CHAMOMILE FLOWERS** (*Matricaria chamomilla*)



**Packing: Carton box 12.5 kg**

**MT/20' FCL: About 3 MT**

**MT/40' FCL: About 6 MT**

**HIBISCUS FLOWERS** (Flores hibisci)



**Hibiscus Flowers/ leaves / Tea Bags**

**CALENDULA FLOWERS/ PETALS** (Calendulae officinalis)



**Super and First Class Quality whole dried flowers / Petals**

**Minimum diameter 3 cm.**

**Orange petals with light perfumed smell, Cleaned without Stems or any Foreign Matters and Well Fumigated**

## **DRIED ROSE PETALS**



**Naturally dried rose petals, natural scent without any additive.**

## **OTHER PRODUCTS**

### **DATES**

#### **❖ SEMI DRIED DATES**



**Free Of Artificial Additives/Flavors.**

**Packing Carton box 1,2, 3 ,5, 10 kgs**

#### **❖ DRIED DATES**





**Free Of Artificial Additives/Flavors.**

**Packing pp bags 25 kgs**

**PEANUTS** (*Arachis hypogaea*)

❖ **UNSHELLED PEANUT (IN-SHELL )**



- Size: (9 / 11 P) OZ (11 / 13 P) OZ
- Count :110 / 120 /135 unshelled nut / 100 gm
- Quality: Premium 2 Kernel per shell
- Packing: 25kg or 50 KG in new jute bags

❖ **SHELLED PEANUT**



- Quality: Premium, red skinned, unroasted, handpicked & selected
- Oil content: Min 42% depends on the method of extraction
- Aflatoxin: Max 10ppb
- Size: 28p-32p ounce/34p-38p ounce/38p-42p ounce/45p 55p ounce
- Container: 18mt / 20 FCL
- Packing: 25kg or 50 KG in new jute bags

### **PURE EGYPTIAN HENNA POWDER (Lawsonia inermis)**



**Produced from pure Henna leaves without any supplements It produces red color**

**PACKING In two bags Plastic inner & polypropylene bags 50 & 25 kg bags**

**Egyptian Natural Lufah**



- Full maturity large cobs with coherent fibers,
- not infected or stained and free from defects
- Packing in bale of 500 Pieces Luffa ( loofah ) shrink wrapped with plastic
- **Size: 40 - 60 cm**
- **Size: 60 -100 cm**
- Container 20' load 50 bale of 500 pieces

## **AMBERGRIS** (*Balaenoptera musculus*)



**Solid waxy substance produced in the digestive system of sperm whales,**

**Ambergris is found in lumps of various shapes and sizes, weighing from 15 g to 50 kg**

**Color: dull grey or blackish**

**Usage: medicines and perfumes**

**ELKHALIL FOR FOODSTUFF & WHOLESALING**

